



SafeScan

SafeScan is a handheld, through-wall human identification system. Our clinically validated algorithms identify concealed humans, whether they are standing or prone, behind a range of materials.

Developed through funding from the UK Ministry of Defence to provide operators with decision support during:

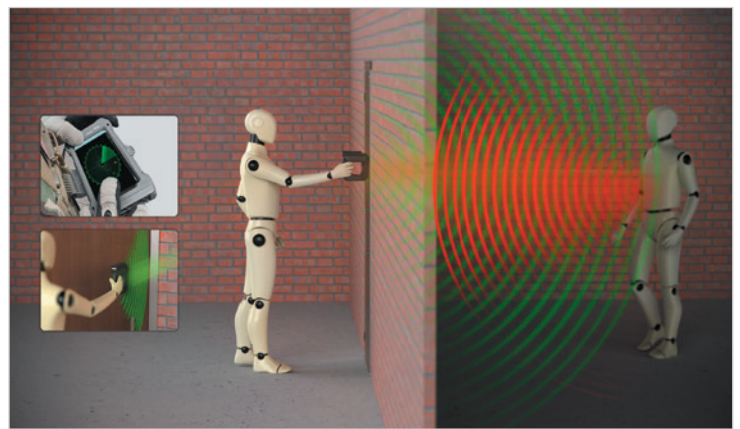
- **Breaching operations**
- **Hostage rescue**
- **Search and rescue**
- **Rapid structure clearance**

SAFESCAN

TECHNOLOGY

SafeScan is a handheld Ultra Wide Band (UWB) radar system operating in the 6-9GHz range, which can distinguish human movement and presence through a variety of urban barriers. The hardware is matched with our algorithms developed through a partnership with UK hospitals where over 400 patients have had their breathing rates monitored and recorded. We can show the ability to track human breathing rate within 0.25 bpm compared against the gold standard of contact-based systems.

SafeScan is being integrated with the Dense Urban Environment Local Intelligent Sensors and Targeting (DUELIST) system to create real time 3D tracking of operators in GPS denied environments.



Current capability:

- Able to detect human presence, distance, movement-level and respiration-rate, through barriers (single brick, double brick, cement, fire doors, stud walling etc.) in real time.
- Using our medically-validated algorithms, the system can't be spoofed by non-human movement.
- Distinguishes between single and multiple adult occupants in a room.
- Determine direction and distance of target, 10 yards+ through cover.
- Demonstrated handheld performance with physical shielding and algorithms to declutter blue force team members.
- Weight 1.5 lbs, ensuring one handed operation.
- Dimensions, 8"x"7.5"x1.5"
- 45° field of view.
- Onboard data processing, visualisation and recording of the operational picture utilizing standard solid-state removable drives.
- Onboard options for remote connection to handheld devices.
- Battery life 24 hours with continuous usage using 20,000mAH rechargeable power bank.
- RF - Power 100mW typical.
- FCC Approved radar transceiver – options to increase the transmit power.

Contact:

USA

e: info@icenilabs.com
t: +1 202 738 1406

FRANCE

e: belinda@emd-pro.com
t: +33(0)297 055 374

REST OF WORLD

e: info@icenilabs.com
t: +44 (0)20 7193 2933